



MATHEMATICS 201-NYB-05

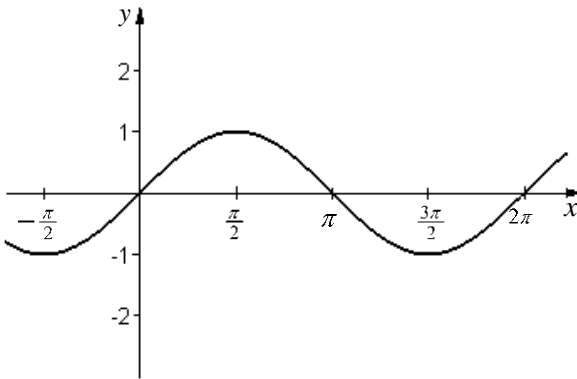
Integral Calculus

Martin Huard

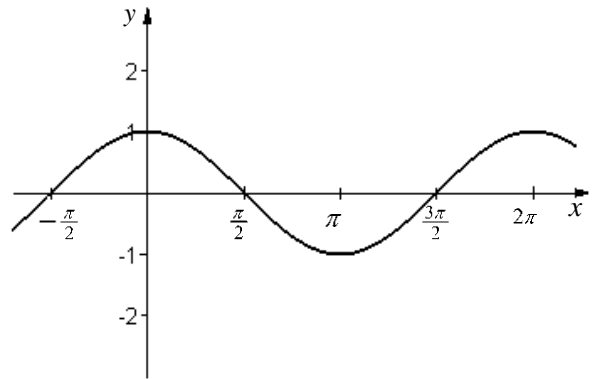
Winter 2012

Trigonometric Graphs

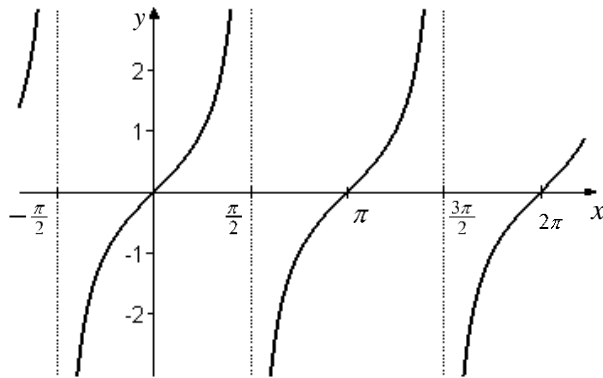
$$y = \sin x$$



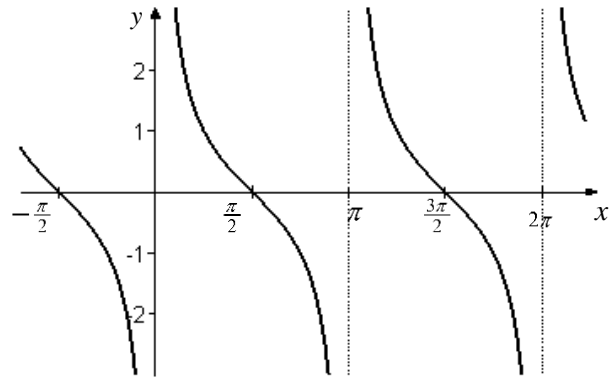
$$y = \cos x$$



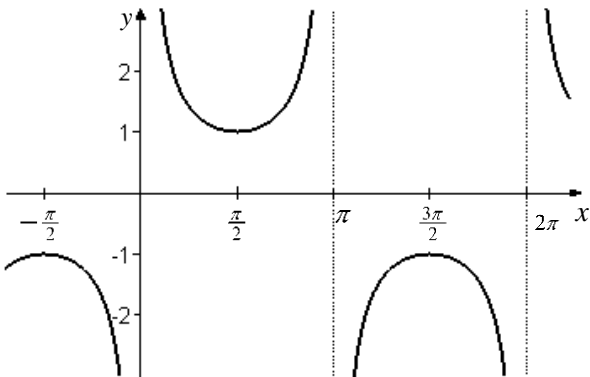
$$y = \tan x$$



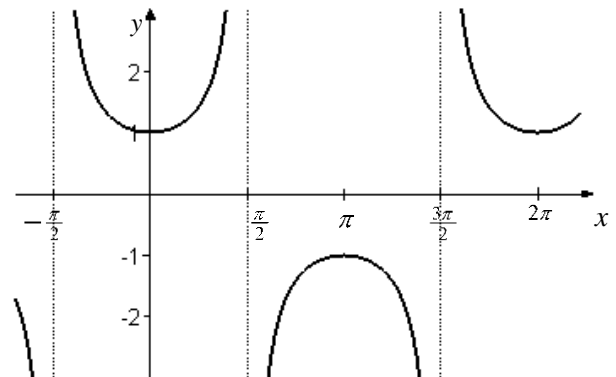
$$y = \cot x$$



$$y = \csc x$$

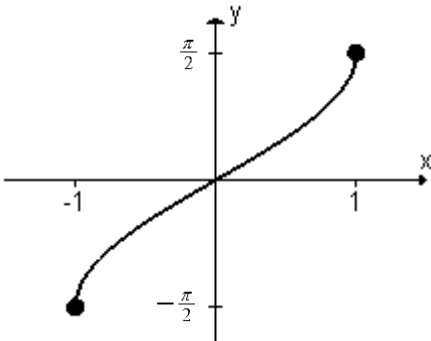


$$y = \sec x$$

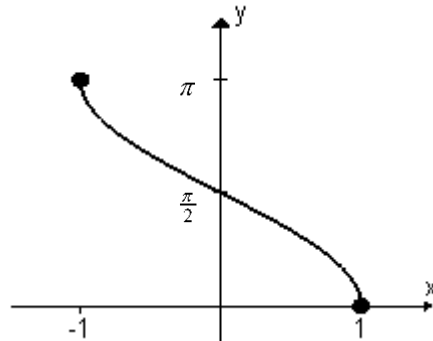


Inverse Trigonometric Functions

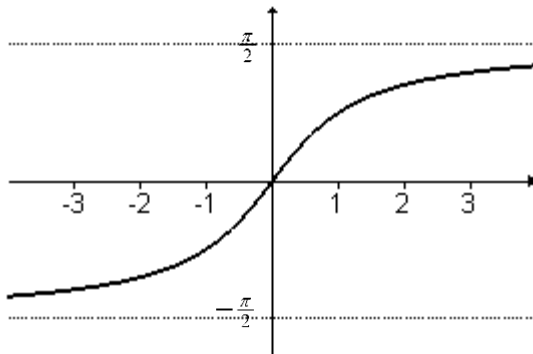
$y = \arcsin x$



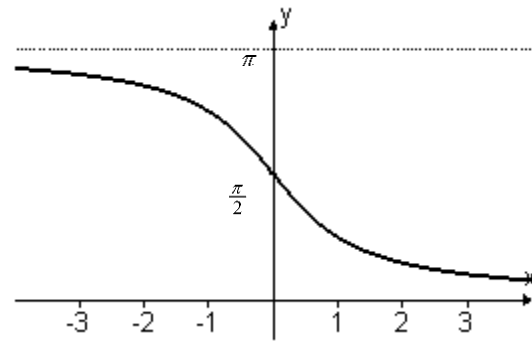
$y = \arccos x$



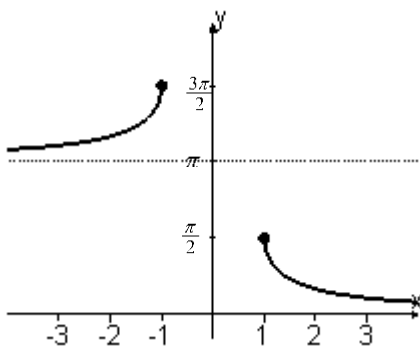
$y = \arctan x$



$y = \operatorname{arccot} x$



$y = \operatorname{arccsc} x$



$y = \operatorname{arcsec} x$

