

MATHEMATICS 201-BNK-05

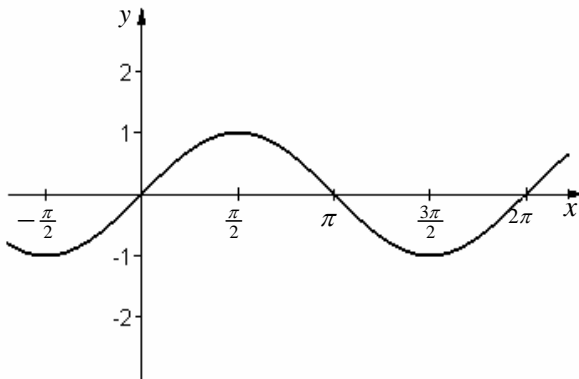
Advanced Calculus

Martin Huard

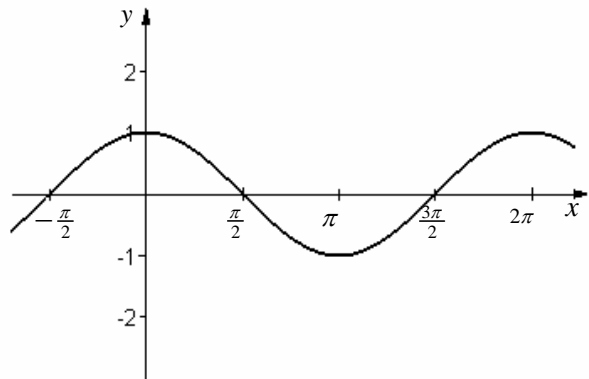
Winter 2007

Trigonometric Graphs

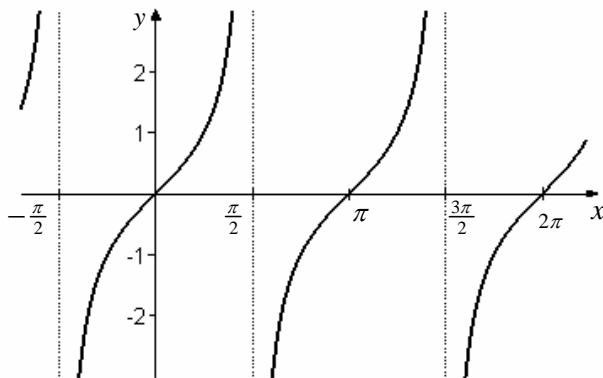
$y = \sin x$



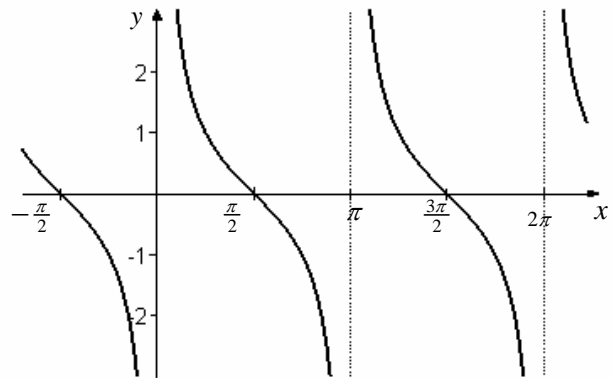
$y = \cos x$



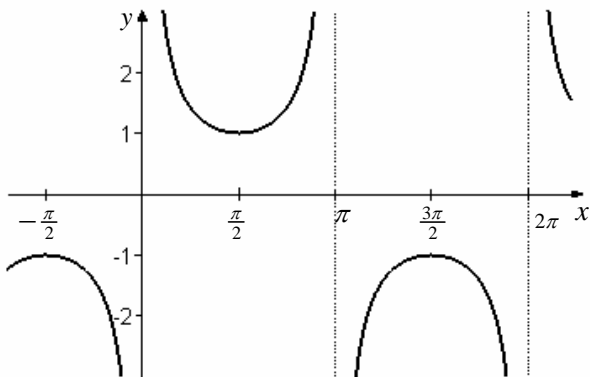
$y = \tan x$



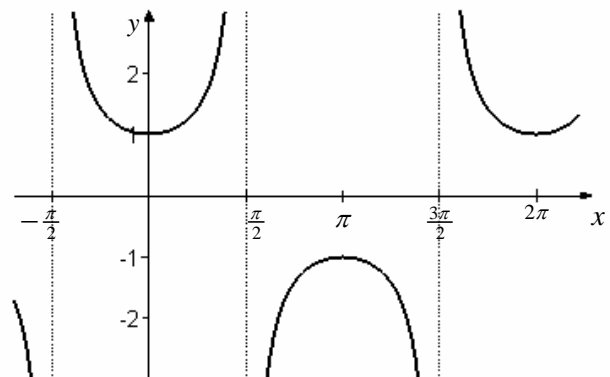
$y = \cot x$



$y = \csc x$

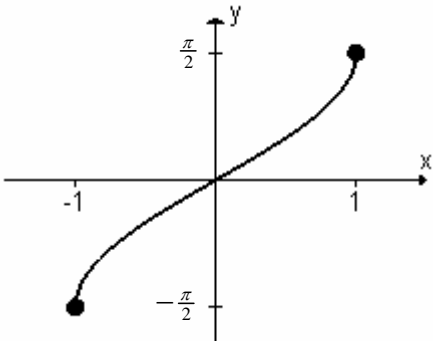


$y = \sec x$

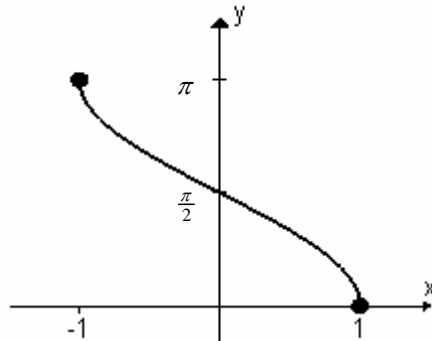


Inverse Trigonometric Functions

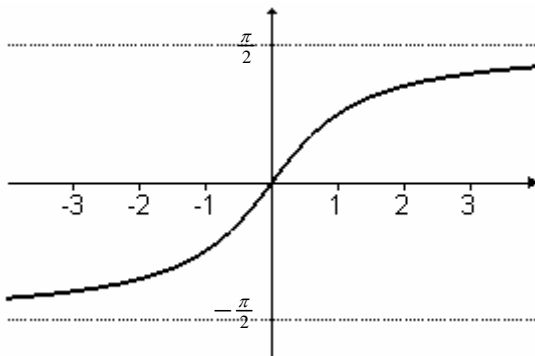
$$y = \arcsin x$$



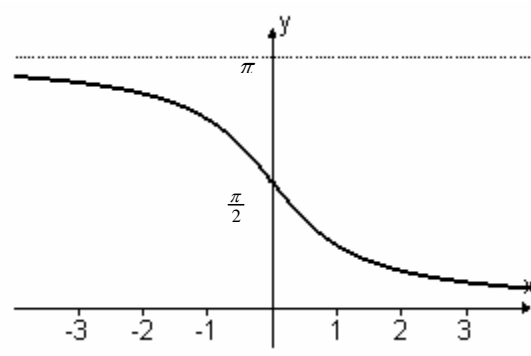
$$y = \arccos x$$



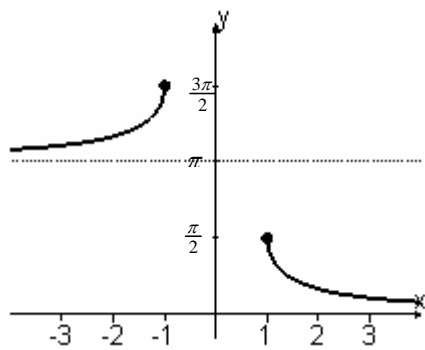
$$y = \arctan x$$



$$y = \operatorname{arccot} x$$



$$y = \operatorname{arccsc} x$$



$$y = \operatorname{arcsec} x$$

